

MALVERN WELLS NEWSLETTER

SPRING 2

week end 22.03.24



A NOTE FROM THE HEAD TEACHER

My final newsletter of the term and that only means one thing, the last time Mrs Matthews will proof read my work, remind me of the things I have forgotten, laugh at the jokes I have attempted to write and keep me on track. I want to extend my sincere thanks to Mrs Matthews for her dedication to education. Mrs M, you have looked out for me, checked up on me, sent me home when I have needed to and remembered that I am a human before a professional. We are all very grateful for what you have done, enjoy your much deserved retirement. We will miss you.



WB 8TH APRIL HEADLINES

Monday	Lei Tucker to start in the office Mrs HC start week in Mandela Mrs Sharrock starts in Lind Class
Tuesday	Mandela possible trip to Priory Park Bridge
Wednesday	
Thursday	Mrs Alford starts teaching in Mandela
Friday	Best Seats café 2.40pm - assembly starts at 2.50pm

NO CLUBS DURING THE FIRST WEEK - OTHER THAN AFTER SCHOOL CLUB.

LATE COLLECTIONS WILL INCUR CHARGES AS IT REQUIRES PAYING SOME STAFF OVERTIME

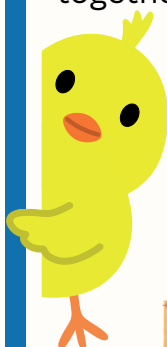
DATES FOR THE FUTURE:

**DIARY CLUB DAILY STARTS AT 8.40AM
BEST SEATS WEEKLY ON FRIDAY AFTERNOONS**

Return to school for Summer Term	08.04.24
Mandela to Priory Park Bridges trip (dependent on numbers for River Field trip)	09.03.24
World Art Day - in class. All children need a apron/old shirt please	15.04.24
Mandela to River Field Study	18.04.24
Cricket Festival Y1/2	30.04.24
Dental Check for Year R	01.05.24
Well Dressing Day	03.05.24
KS2 SATS Week	13.05.24
Y4/5 to PGL	15-17th May
INSET DAY - no children in school	22.05.24
Last day of Summer 1 Half Term	24.05.24

Easter Holidays

We hope all staff, families and governors have a really restful break. We would love to share any WOW moments you share together through our Facebook page.



**HAPPY
EASTER**



Attendance

Whole school target 23-24	96%
Whole school attendance to date	93.3%
Lind	92.6%
Nightingale	98.1%
Mandela	91.2%
Chilver	93.3%

SUDC is a category of death in children aged 1-18 that remains unexplained after a thorough investigation, including an autopsy.



A medical examiner or coroner could rule a child's death SUDC when s/he completes a thorough evaluation and finds no other cause of death.



At this time, we do not know what causes SUDC, how to predict it or how to prevent it.



Penelope's Eastnor Mini-Mud Bath fundraiser for SUDC UK

Help Penelope Blike raise money to support SUDC UK

We are super proud of 'little' Penny who is running the Eastnor Castle mud run for a special cause. Please do sponsor her.