

MALVERN WELLS
NEWSLETTER



A note from...
Mrs. Albord



A happy Friday from me. It has been a super busy week here and I have to stop and pause to thank Mrs. Jackson and Ms. Spilsbury for their dedication and creativity in coordinating and producing the most amazing well. Do please try and visit it over the weekend. A number of staff will also be at Priory Park for the presentation on Monday if any of our community would like to join us. Lets hope the sun shines!

A warm welcome to Liliia who joined us in Nightingale this week. We are looking forward to seeing you shine with us.

Mrs. Dainty and I have spent time this week crafting our curriculum for September and we are very excited with the direction we are heading.

Dates this Term

DIARY CLUB DAILY STARTS AT 8.40AM
BEST SEATS WEEKLY ON FRIDAY MORNINGS

Diary Entries	Date
Bank Holiday, school closed	06.05.2024
Non-Uniform Day, chocolate donations	10.05.2024
KS2 SATS week	13.05.2024
Year 5 Transition visit to Dyson Perrins 11:20-13:00	14.05.2024
Y4/5 PGL Residential Trip	15.05.2024
Malvern Rugby Club Primary School Tag session 09:00-15:30	17.05.2024
Chocolate Bingo 17:15-16:30	17.05.2024
KS1 SATS week	20.05.2024
Mr. Hall, Head of Year 7 at the Chase, to visit Year 6	20.05.2024
Kings Worcester Y5 Cricket Activity Morning 10:00am	20.05.2024
INSET DAY - No children in school	22.05.2024
Mr. Fieldhouse, Headmaster at the Chase, to visit Year 6	23.05.2024
Last day of Summer 1 Half Term	24.05.2024
Half Term	27-31 May
School Reopens	3 June

This week Attendance

WHOLE SCHOOL TARGET 2023-2024:

96%

Whole school attendance to date	94.9%
Lind	94.5%
Nightingale	98.6%
Mandela	93.1%
Chilver	92.6%

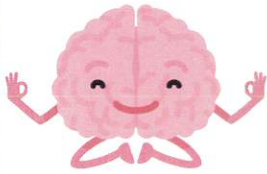
WB 7 May Headlines

Monday	
Tuesday	Sign Language Club 12.45-13.15 TTRS 15.30-16.00 Arts Club 15.30-16.00
Wednesday	Running club 12.45-13.15 Young Leaders, Y5& 6 Drama Club 15:30-16:30
Thursday	Coding 15.30-16.30 Football 15.30-16.15
Friday	Best Seats Assembly All welcome Cafe starts at 8.40 Nature Club

**LATE COLLECTIONS WILL INCUR CHARGES AS IT
REQUIRES PAYING SOME STAFF OVERTIME**



GREAT WAYS TO USE YOUTUBE FOR KIDS

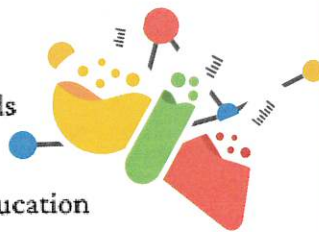


BRAIN BREAKS

- Go Noodle
- Cosmic kids Yoga
- PE with Joe
- Kids Bop
- Debbie Doo Kids Tv
- The Learning Station
- Move to learn MS
- Koo Koo Kanga Roo

SCIENCE & HISTORY

- Sick Science!
- Crash Course Kids
- National Geographic Kids
- Lab 360
- McGraw- Hill Prek-12
- Smithsonian Science Education
- Homeschool Pop



MATH

- Math songs by NumberRock
- Ted Ed
- Math & Learning Videos 4 Kids
- Kids Educ - Kids educational games
- Numberphile
- Monster Math Squad
- Vihart

ARTS & CRAFTS

- Little Crafties
- Art for Kids Hub
- Inner Child Fun Media
- Kids Activities Blog
- The Artful Parent
- Arts & Crafts by 3 Sisters
- Kids Cooking & Crafts
- Drawkidsdraw



CHOCOLATE BINGO



17.05.2024

5:15PM-6:30PM

Please complete the Google Form to request tickets

<https://forms.gle/118k81Q6JiKNbixx8>

£5 PER CHILD TICKET

CASH TO BE SENT TO OFFICE IN A NAMED ENVELOPE
ALL CHILDREN MUST BE ACCOMPANIED BY AN ADULT
SIBLING/EXTRA ADULT TICKETS AVAILABLE FOR £5

INCLUDES 3 BINGO ROUNDS, JUICE AND A BISCUIT

BEST SEATS CAFE/BAR/SWEETS/SNACKS AVAILABLE
FOR AN EXTRA COST

Deadline of payment: 10 May 2024

Social Media Reminder

Please complete the online form prior to 9 May if you **do not** want your child to appear on any of our social media platforms. Thank you!



<https://forms.gle/BDyrtHw99webXTkSA>



HM Government

Helping pay for your childcare

To find out how you can save money on your childcare, use the following link: childcarechoices.gov.uk

The details you enter into the eligibility checker will never be stored.



Finance related Queries



Mrs. Elliott will manage all finance-related queries at the school. You can contact her using the following email:

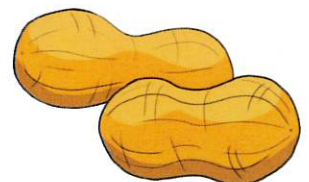
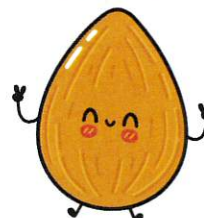
finance@malvern-wells.worcs.sch.uk

Non Uniform Day 10 May

On 10 May, all children are invited to attend school in home clothes in exchange for a contribution to our chocolate bingo event.



***Reminder, no nuts**





Children are invited to become divers and explore the oceans, diving deep into the sea while learning about Jesus. Climb aboard a submarine and get ready to dive deep into the sea, through the shallows, the midnight zone and down into the trenches at the very bottom of the ocean. Children will have a 'whale' of a time as they explore the story of Jesus and discover just how much God loves us!

Please book in using the QR code or <https://forms.office.com/e/gHjgJb9yKw>

WR14 3JX

**Tuesday 27th August
to Friday 30th August
9:30am ~ 12noon**



Let your
light
Shine

Malvern Wells C.E Primary Dressing Jubilee well

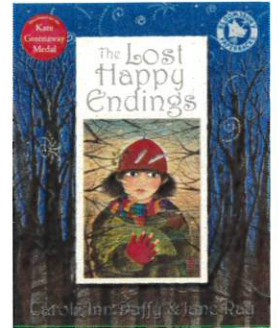


Location of Jubilee Well:

Wells Road near the junction with Grundy's Lane and Green Lane, Malvern Wells, near our beautiful school.

Theme: Trees, we got our inspiration from a book called:

The Lost Happy Endings by Carol Ann Duffy



The well-dressing prize-giving will be held on 6 May at the bandstand in Priory Park at 2pm.

Well Celebrations

Diary of events

Friday 3rd May

Well-dressing day
6.30pm thanksgiving blessing St James's churchyard spout, West Malvern

Saturday 4th May

Well-dressing judging
Minibus tours of dressed wells
Boffy Malvern Arts market in Priory churchyard grounds
9am – 5.30 British Society of Dowsers symposium, Malvern Cube: talks and workshops
4pm blessing Malvhina, Belle Vue Island

Sunday 5th May

Minibus tours of dressed wells
9am – 4.30 British Society of Dowsers symposium, Malvern Cube: talks, workshops & walks
10am Beautiful Music at St Ann's Well with Ray Mytton
3pm blessing Hayslad spout, West Malvern with Malvern Border Druids.

Monday 6th May

Minibus tours of dressed wells
En Plein Air art event in town all day (judging / prize-giving from 3pm in Malvern Theatres)
10am – 5pm Water Festival Family Fun Day in Priory Park, including:
Food & drinks: stalls, vans & tea-tent
Activities for children & adults (creative clay, circus skills, face-painting, soap-making)
10am – 12pm Maypole dancing
12.30pm live music: Journeyman
1.30pm dance by Malvern Stagecoach Dance School
2pm well-dressing prize-giving at the bandstand
2.45pm Malvern Water Cure re-enactment
3pm live music: Journeyman
3.45pm – 4.30pm Malvern Samba Band





Starting Well Partnership
EVERY CONTACT SHAPES A LIFE

School Health Nursing Team -
Utilising SchoolScreener to support you and
your child throughout their school journey

Don't forget to sign up
for a SchoolScreener
Parent Portal Account



You need a Parent Portal account to:

- Complete your child's health questionnaire in reception and yr 6
- Receive results from their reception hearing screening
- Receive results from their height and weight measurements in reception and yr 6



School Health Nursing Team - SchoolScreener
www.startingwellworcs.nhs.uk/schoolscreener

Reception Timings

Please note the Mrs Tucker in Reception is available in the office as follows:

MON-TUE-FRI 8:30AM – 16.00PM
WED-THU 8:30AM – 12.30PM

To assist you outside these hours, use the intercome at the Reception entrance door or telephone 561179.



SCHOOL SUPPORT CAREERS

FULLY FUNDED ONLINE

Are you looking for a job that fits in around your family? Gain the necessary qualifications to support you, fully funded by the ESFA (Education Skills Funding Agency).

Levels 1, 2 & 3 for School Support Course with a Guaranteed Job Interview.

- **Our classes are based online - Run only in term time - During school hours to fit in with the school run -**

Course Times

- Total of 5 days per week (Mon-Fri) for 6 weeks
- There are 2 lessons per day (9.30am – 11am) & (1pm – 2pm)
- Must have internet access and a laptop or tablet.


- **No prior experience necessary -**

Eligibility Criteria

- Must Be Aged 19+
- Must Claim Benefits (Universal Credit, JSA, ESA, PIP, Income Support, Housing Benefits or any type of Tax Credit including Child Tax Credit). If you live in Merseyside, you do not need to claim any benefits.
- You Can't be a student or an International Student
- You Must have lived in the UK for a Minimum of 3 Years (Except if you are from the Ukraine).

www.studysmartuk.online




Education & Skills
Funding Agency