

# MALVERN WELLS NEWSLETTER



WEEK 1 06.09.2024



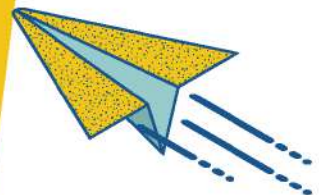
## A NOTE FROM... MRS ALFORD:



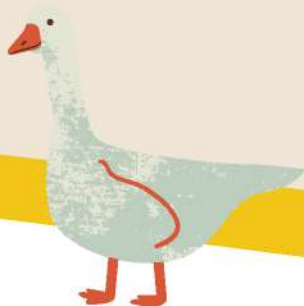
A warm welcome to the first newsletter of our new academic year and a special welcome to our new families and Miss Holyhead. We are delighted to have you as part of our Malvern Wells community. It has been a wonderful start for all of us and the children are very settled into new spaces.

It was lovely to welcome a number of parents to our curriculum meetings (Y2-Y6) on Wednesday and, for those who could not make it, the powerpoints will be added to our website class pages. The Y1 curriculum evening is on Wednesday 11th September from 3.15pm (children are welcome to stay and play while you listen).

Over the summer, we have been hugely blessed by the kindness of the Isaac family who have developed our school garden having sourced support from DH Philips, Bradfords, St Peter's Garden Centre, Travis and Bertie's Grandma. The children will be taught how to use the garden as it has been designed to ensure it is a space of sanctuary and connection for them. We are so thankful for your commitment to our community.



CONNECTING  
WITH THE  
COMMUNITY





## DATES TO NOTE

### TERM 1: SEP-DEC

DIARY ENTRIES	Date
Curriculum Meeting: Y1 & YR at 15:15	11.09.24
Class 4 (Y6) to Space Centre	20.09.24
Parents phonics workshops, Y1 & YR	24.09.24
Y3 & Y4 Boundless Outdoors, Residential	26.09.24 27.09.24
Y6 Language Ambassadors	2.10.24
Parent Forum 15:30	2.10.24
Iron Age Fort	7.10.24
SEN Parent Meetings	8.10.24
SEN Parent Meetings	11.10.24
Harvest Festival: Drop off at All Saints Church 08:40am	16.10.24
Goodrich Castle, Y1 & Y2	21.10.24
Parents Evening	23.10.24
Parents Evening	24.10.24
Last day of Half Term	25.10.24
Return to School	4.11.24
Remembrance Best Seats	8.11.24
PTA Event	8.11.24
Anti Bullying Week Starts	12.11.24
Children in Need	17.11.24
YR & Y1 Local Area Walk	TBC

CHRISTMAS FAYRE	6.12.24
Class 1 Trip to Smart Trees	12.12.24
INSET (no students in school)	13.12.24
Christmas Show YR-Y4, Y5 & Y6 join in for the afternoon	18.12.24
SCHOOL ENDS FOR TERM 1	20.12.24
Spring 1, Return to School	6.1.2025

## THIS WEEK SEPTEMBER

### W/C 9.9.2024

\*DIARY CLUB starts at 8.40am daily and doors close at 08:50 for morning registration

9, Monday	Reception: full time Class 2 (Year 2) PE
10, Tuesday	
11, Wednesday	Curriculum Meeting: Y1 & YR at 15:15 Class 3 (Year 3 & 4) PE
12, Thursday	Class 4 (Year 6) PE
13, Friday	Class 1 (Year 1 & Reception) PE Best Seats Assembly <u>Cafe opens 08:40</u>



# ATTENDANCE

WHOLE SCHOOL TARGET  
ATTENDANCE: 96%

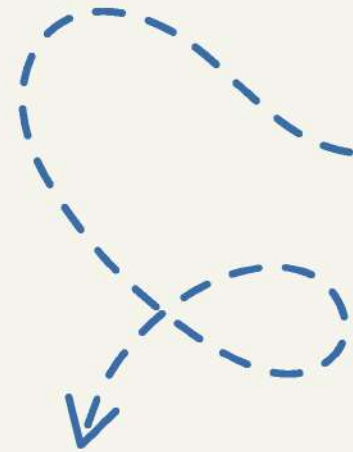
Whole School Attendance this week  
: 97.7%

Class 1: 99.3 %  
Reception & Year 1 &

Class 2: 100%  
Year 2

Class 3: 96.4%  
Year 3 & 4

Class 4: 95.2%  
Year 5 & 6



CONNECTING  
WITH FRIENDS

# BEST SEATS

Class 1: R & Year 1  
All of Reception

Class 2: Year 2  
Beth & James

Class 3: Year 3 & 4  
Dean Smith

Class 4: Year 5 & 6  
Ted & Charlotte

# COMMUNICATION REMINDERS

please email the right channel or your  
communication may be missed accidentally.

Wrap around queries:  
[wac@mwprimary.co.uk](mailto:wac@mwprimary.co.uk)

Finance queries including WAC:  
[finance@mwprimary.co.uk](mailto:finance@mwprimary.co.uk)

SENCO queries:  
[SENCO@mwprimary.co.uk](mailto:SENCO@mwprimary.co.uk)

Everything else:  
[office@mwprimary.co.uk](mailto:office@mwprimary.co.uk)



# WELCOME MISS HOLYHEAD

## YEAR 2 TEACHER

### A FEW QUESTIONS

What is one of your favourite pass times?  
I love Baking and enjoy running.

What would the students be surprised to find out about you?  
I am obsessed with cats!

Do you have any pets?  
I had a beautiful cat called Ariel, but unfortunately passed away.

What is your dream vacation?  
I love going to Europe, I've just returned from Greece, but have always wanted to go to Italy.

Why did you become a teacher?  
To make a difference in this world, I love children and everything about the job. "I'm so excited that I joined the Malvern Wells family. I can't wait to see what the rest of the year holds".

Miss Hollyhead has been such a joy in the school, with her little wicker basket, songs and cheery disposition, she told us on the first day that she often gets called funny names by mistake, like Miss Hollywood or Miss Hogsmeade (for those Harry Potter fans).



### CHANGES TO NOTE:

- Wrap around care is offered till 16:30/17:30pm at a daily rate of £10 regardless of collection time
- PE kits are to be worn into school with trainers on days when students have PE
- The PE hoody is meant to be worn on days when students have PE only.



# CONNECTING WITH PARENTS



## STEP 1

OPEN THE ASDA REWARDS APP  
CLICK THE CASHPOT FOR SCHOOLS BANNER



you scan,  
we donate  
££s TO SCHOOLS.

CASHPOT  
FOR  
SCHOOLS

only with  
ASDA  
REWARDS

with  
Parentkind

ONCE YOU HAVE OPTED IN AND SELECTED A SCHOOL, ASDA WILL ADD £1 TO YOUR CHOSEN SCHOOLS CASHPOT TO HELP GET THEM STARTED ASDA WILL THEN DONATE A PERCENTAGE OF YOUR SHOP TO YOUR CHOSEN SCHOOL EVERY TIME YOU SHOP AND SCAN.

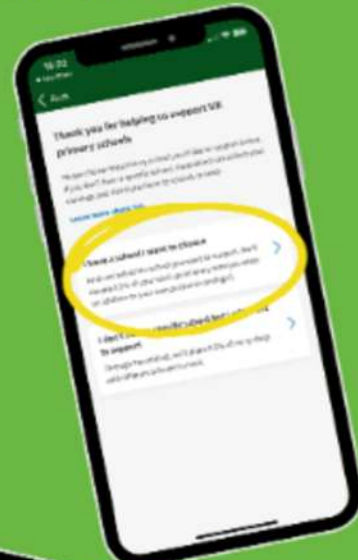
## STEP 2

CLICK COUNT ME IN



## STEP 3

CLICK I HAVE A SCHOOL  
I WANT TO CHOOSE



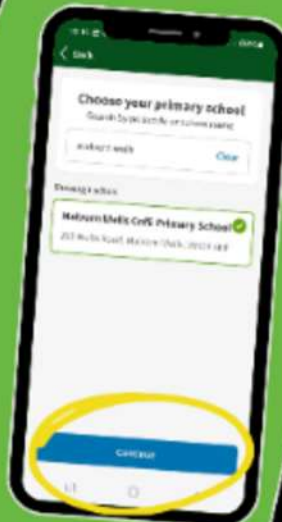
## STEP 4

TYPE IN "MALVERN WELLS"



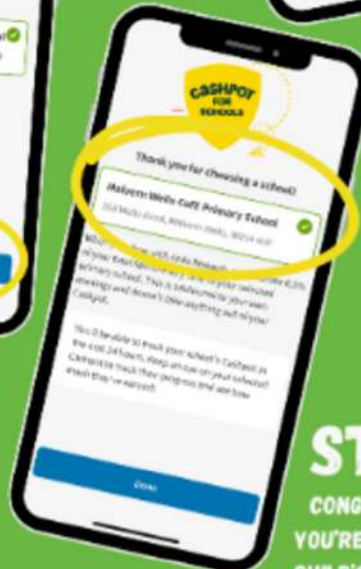
## STEP 5

DOUBLE CHECK YOU'VE CHOSEN  
THE CORRECT SCHOOL THEN  
CLICK SUBMIT



## STEP 6

CONGRATULATIONS  
YOU'RE HELPING YOUR  
CHILD'S SCHOOL RAISE  
MONEY



FRIENDS OF MALVERN WELLS CE PRIMARY SCHOOL

# Love Learning

...bespoke multi-sensory teaching

I am an energetic, enthusiastic teacher with over 25 years of experience ranging from nursery to Year 8. I am passionately driven to help children love learning and achieve their best!

Over time, I have observed many pupils who are not reaching their brightest potential, despite good teaching. My professional curiosity made me want to understand how I could further support these children. This led to my passion for supporting children with special educational needs and my specialism in working with children with dyslexia.

I deliver learning in a cumulative, personalised multi-sensory way and having FUN is at the heart of what I do. This has been the key to success for my pupils! **Body**

I am offering tutoring sessions at Malvern Wells Primary School on a Monday afternoon so children can access these sessions during the school day.

Contact me for further information using the details below - text, call or Whatsapp.



07973 232485







# On the beat in The Malvern Hills

Schools edition.

September  
2024

## Welcome back to school!

The Malvern Hills Safer Neighbourhood teams have a good working relationship with schools in the local area. We visit schools for educational inputs or just to have a chat with the kids and tell them what we do and how we can help if needed. We like to provide some presence occasionally outside school at drop off and pick up so don't be alarmed if you see us!

We would like to give you a bit of information about how we can make the journey to and from school safer for everyone.

In relation to parking outside schools, please park considerately, ensure others around you can move their cars safely and you aren't blocking any local residents in. Please adhere to local speed limits. "School Keep Clear" restrictions ensure a clear line of sight for motorists and children, no vehicle (even blue badge holders) can stop on the zig zagged markings.

As mornings and evenings become darker please ensure children can be seen if walking or cycling to and from school. This can be achieved by wearing brighter or fluorescent clothing or by adding a light or reflective strip to their bags. If cycling, please ensure sure they are using a serviceable set of lights in order to see **and** be seen.

A quick word about internet safety.

Do we really know what our children do when they're online?

In order to make the internet a safer place for them encourage regular conversations about the good and not-so-good things about the internet in age appropriate language. Don't shy away from potential issues but try not to make it scary. Keep it general so as to not get your child curious about specific sites.

It's important that children know that not everyone they meet online is who they appear to be, whether that's on social media, while gaming or even on YouTube. Be aware that changes in mood or behaviour may be a sign of online abuse.

Talk to children about oversharing, do they need to share personal details in their posts, profiles and chats? Unfortunately, once something is shared or posted online, like it or not, it's there forever.

For more information relating to online safety visit [www.getsafeonline.org](http://www.getsafeonline.org)

Lastly, please don't make your children scared of the Police. While out and about in the community we often hear children being told that the police will "lock you up" or "catch you if you're naughty". We want children to come to us if they are scared, lost or in danger. We don't want them to run away from us.

If your little one is just starting in Reception or in Year 6 about to make the jump to big school next year we hope they have a fun and safe year.





# CONNECTING THROUGH SPORT



**OPEN  
DAY  
15.09.24  
2:30PM-  
4:30PM**

## **COLWALL AND MALVERN HOCKEY CLUB**

### **HOCKEY TRAINING**

Sessions for all ages and abilities

Malvern College Astro pitches  
WR14 3DF

#### **TUESDAYS**

Girls School yrs 6 – 8  
6:30 pm – 7:30 pm

Ladies (13yrs+)  
7:30 pm – 9 pm

#### **WEDNESDAYS**

Mixed School yrs 2-5yrs  
6:30 pm – 7:30pm

Boys School yrs 6 – 8  
7:30pm – 8:30pm

Mens (13yrs +)  
7:30 – 8:30pm

Back to Hockey & Walking Hockey  
7:30 pm – 8:30 pm

Contact the club for signing up details

cmhockey@hotmail.co.uk IG @COLVERNHC FB @Colwall and Malvern Hockey Club

